

## Inside Micrometers

### Tubular Inside Micrometers SERIES 133 — Single-Rod Type

- Standard Single-Rod Type inside micrometer.
- Carbide measuring faces.
- The sleeve is rotated to adjust the reference point adjustment when setting to a length standard.
- Optional Setting Rings (nominal size below 300 mm), CERA Inside Micro Checker and Gauge Block Accessory Sets are available as reference gages datum adjustment. (Refer to pages C-28, C-52, and E-17 to E-20 for details)



133-143

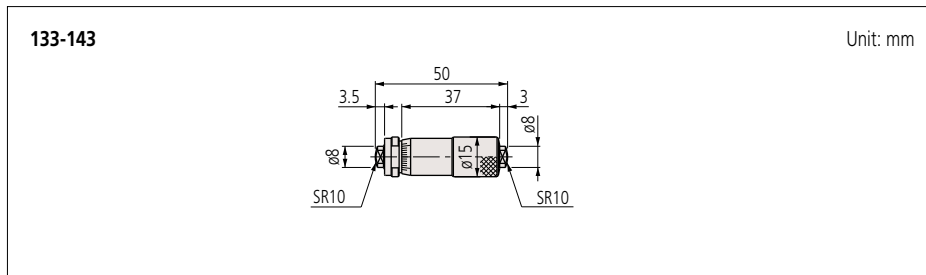
#### SPECIFICATIONS

Metric		Individual	
Order No.	Range (mm)	Graduation (mm)	Maximum permissible error $J_{MPE}$ ( $\mu\text{m}$ )
133-143	50 - 75	0.01	$\pm 3$

Inch		Individual	
Order No.	Range (in)	Graduation (in)	Maximum permissible error $J_{MPE}$ (in)
133-223	2 - 3	0.001	$\pm 0.00015$

#### DIMENSIONS



133-144

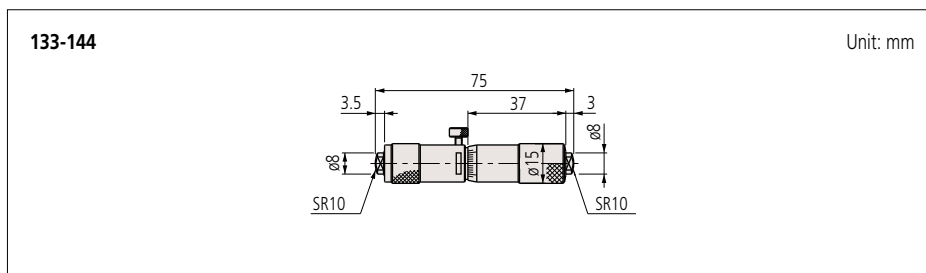
#### SPECIFICATIONS

Metric		Individual	
Order No.	Range (mm)	Graduation (mm)	Maximum permissible error $J_{MPE}$ ( $\mu\text{m}$ )
133-144	75 - 100	0.01	$\pm 4$

Inch		Individual	
Order No.	Range (in)	Graduation (in)	Maximum permissible error $J_{MPE}$ (in)
133-224	3 - 4	0.001	$\pm 0.0002$

#### DIMENSIONS



#### Measurement example



## Micrometer Set



133-902

- 133-901** (Metric)  
 • Range: 50 - 150 mm (4 heads/set)  
 • Models included:  
**133-143 133-144**  
**133-145 133-146**  
 with fitted case

- 133-902** (Metric)  
 • Range: 50 - 300 mm (10 heads/set)  
 • Models included:  
**133-143 133-144**  
**133-145 133-146**  
**133-147 133-148**  
**133-149 133-150**  
**133-151 133-152**  
 with fitted case

- 133-903** (Inch)  
 • Range: 2 - 6 in (4 heads/set)  
 • Models included:  
**133-223 133-224**  
**133-225 133-226**  
 with fitted case

- 133-904** (Inch)  
 • Range: 2 - 12 in (10 heads/set)  
 • Models included:  
**133-223 133-224**  
**133-225 133-226**  
**133-227 133-228**  
**133-229 133-230**  
**133-231 133-232**  
 with fitted case



133-152

## SPECIFICATIONS

Metric		Individual	
Order No.	Range (mm)	Graduation (mm)	Maximum permissible error $J_{MPE}$ ( $\mu\text{m}$ )
133-145	100 - 125	0.01	$\pm 5$
133-146	125 - 150		
133-147	150 - 175		
133-148	175 - 200		
133-149	200 - 225		$\pm 6$
133-150	225 - 250		
133-151	250 - 275		
133-152	275 - 300		
133-153	300 - 325		$\pm 7$
133-154	325 - 350		
133-155	350 - 375		
133-156	375 - 400		
133-157	400 - 425		$\pm 8$
133-158	425 - 450		
133-159	450 - 475		
133-160	475 - 500		
133-161	500 - 525	$\pm 9$	
133-162	525 - 550		
133-163	550 - 575		
133-164	575 - 600		
133-165	600 - 625	$\pm 10$	
133-166	625 - 650		
133-167	650 - 675		
133-168	675 - 700		
133-169	700 - 725	$\pm 11$	
133-170	725 - 750		
133-171	750 - 775		
133-172	775 - 800		
133-173	800 - 825	$\pm 12$	
133-174	825 - 850		
133-175	850 - 875		
133-176	875 - 900		
133-177	900 - 925	$\pm 13$	
133-178	925 - 950		
133-179	950 - 975		
133-180	975 - 1000		
133-175	850 - 875	$\pm 14$	
133-176	875 - 900		
133-177	900 - 925		
133-178	925 - 950		
133-179	950 - 975	$\pm 15$	
133-180	975 - 1000		
133-175	850 - 875		$\pm 16$
133-176	875 - 900		
133-177	900 - 925		
133-178	925 - 950		

Inch		Individual	
Order No.	Range (in)	Graduation (in)	Maximum permissible error $J_{MPE}$ (in)
133-225	4 - 5	0.001	$\pm 0.00025$
133-226	5 - 6		
133-227	6 - 7		
133-228	7 - 8		
133-229	8 - 9		$\pm 0.0003$
133-230	9 - 10		
133-231	10 - 11		
133-232	11 - 12		

## DIMENSIONS

133-145 to 133-180

Unit: mm

Order No.	L <sub>1</sub>	L <sub>6</sub>	L <sub>7</sub>
133-145	100	5	3
133-146	125	5	3
133-147	150	18	15
133-148	175	18	15
133-149	200	18	15
133-150	225	18	15
133-151	250	18	15
133-152	275	18	15
133-153	300	18	15
133-154	325	18	15
133-155	350	18	15
133-156	375	18	15
133-157	400	18	15
133-158	425	18	15
133-159	450	18	15
133-160	475	18	15
133-161	500	18	15
133-162	525	18	15
133-163	550	18	15
133-164	575	18	15
133-165	600	18	15
133-166	625	18	15
133-167	650	18	15
133-168	675	18	15
133-169	700	18	15
133-170	725	18	15
133-171	750	18	15
133-172	775	18	15
133-173	800	18	15
133-174	825	18	15
133-175	850	18	15
133-176	875	18	15
133-177	900	18	15
133-178	925	18	15
133-179	950	18	15
133-180	975	18	15

## Inside Micrometers

### Tubular Inside Micrometers SERIES 137, 337 — Extension-Rod Type

- Wide range of inside measurements possible by combining Extension Rods and anvils with the micrometer head.
- Two types of measuring faces are available; with or without carbide tip. (The **337** Series is only available with carbide tip)
- The sleeve is rotated to adjust the reference point adjustment when setting to a length standard.
- An inside length standard is required for accurately setting the micrometer.



337-301

### SPECIFICATIONS

#### Metric

Order No.	Range (mm)	Resolution (mm)	Spindle feed error* (μm)	Micrometer head stroke (mm)	Extension rods		Display unit (mm)
					Qty	Size (mm)	
337-101	200 - 225	0.001	3	25	—	—	200 - 225
337-301	200 - 1000				6	25, 50, 100 (2 pcs.), 200, 300	
337-302	200 - 1500				7	25, 50, 100, 200, 300 (3 pcs.)	

#### Inch / Metric

Order No.	Range (in)	Resolution	Spindle feed error* (in)	Micrometer head stroke (in)	Extension rods		Display unit (in)
					Qty	Size (in)	
337-102	8 - 9	0.0001 in/ 0.001 mm	0.00015	1	—	—	8 - 9
337-303	8 - 40				6	1, 2, 4 (2 pcs.), 8, 12	
337-304	8 - 60				7	1, 2, 4, 8, 12 (3 pcs.)	

- Battery and Scale Type: SR44 (1 pc.), **938882**, for initial operational checks (standard accessory)
- Battery life: Approx. 1.2 years under normal use
- Scale type: Electromagnetic induction-type rotary encoder
- \* "Spindle feed error" refers to the difference between the maximum and minimum indication error values within the measuring range of the micrometer head

MeasurLink<sup>®</sup> ENABLED  
Data Management Software by Mitutoyo



Applicable models:  
SERIES 337

### Measurement example

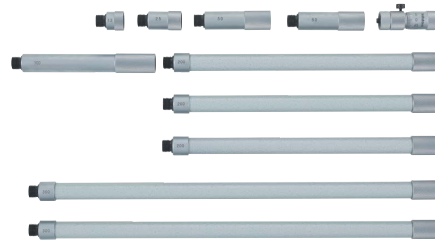


### Functions

Zero-setting  
Origin restoration  
Data hold  
2-point Preset  
Function lock  
Automatic power ON/OFF  
Error alarm  
Data output

### Optional Accessories

Order No.	Type	description
05CZA662	B	Connecting cable (1 m)
05CZA663	B	Connecting cable (2 m)
06AFM380B	B	USB Input Tool Direct (2 m)
02AZD790B	B	Connecting cables for U-WAVE-T (160 mm)
02AZE140B	B	Connecting cables for U-WAVE-T For foot switch



137-205

## SPECIFICATIONS

### Metric

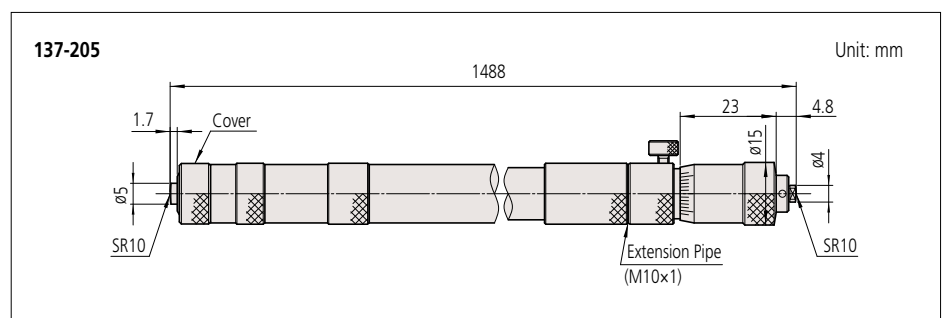
Order No.	Range (mm)	Graduation (mm)	Spindle feed error* (μm)	Micrometer head stroke (mm)	Extension rods		Main unit (mm)
					Qty	Size (mm)	
137-201	50 - 150	0.01	3	13	3	13, 25, 50	50 - 63
137-202	50 - 300				5	13, 25, 50 (2 pcs.), 100	
137-203	50 - 500				6	13, 25, 50 (2 pcs.), 100, 200	
137-204	50 - 1000				8	13, 25, 50 (2 pcs.), 100, 200 (2 pcs.), 300	
137-205	50 - 1500				10	13, 25, 50 (2 pcs.), 100, 200 (3 pcs.), 300 (2 pcs.)	
With carbide measuring face							
137-206	50 - 150	0.01	3	13	3	13, 25, 50	50 - 63
137-207	50 - 300				5	13, 25, 50 (2 pcs.), 100	
137-208	50 - 500				6	13, 25, 50 (2 pcs.), 100, 200	
137-209	50 - 1000				8	13, 25, 50 (2 pcs.), 100, 200 (2 pcs.), 300	
137-210	50 - 1500				10	13, 25, 50 (2 pcs.), 100, 200 (3 pcs.), 300 (2 pcs.)	

### Inch

Order No.	Range (in)	Graduation (in)	Spindle feed error* (in)	Micrometer head stroke (in)	Extension rods		Main unit (in)
					Qty	Size (in)	
137-211	2 - 6	0.001	0.00015	0.5	3	0.5, 1, 2	2 - 2.5
137-212	2 - 12				5	0.5, 1, 2 (2 pcs.), 4	
137-213	2 - 20				6	0.5, 1, 2 (2 pcs.), 4, 8	
137-214	2 - 40				8	0.5, 1, 2 (2 pcs.), 4, 8 (2 pcs.), 12	
137-215	2 - 60				10	0.5, 1, 2 (2 pcs.), 4, 8 (3 pcs.), 12 (2 pcs.)	
With carbide measuring face							
137-216	2 - 6	0.001	0.00015	0.5	3	0.5, 1, 2	2 - 2.5
137-217	2 - 12				5	0.5, 1, 2 (2 pcs.), 4	
137-218	2 - 20				6	0.5, 1, 2 (2 pcs.), 4, 8	
137-219	2 - 40				8	0.5, 1, 2 (2 pcs.), 4, 8 (2 pcs.), 12	
137-220	2 - 60				10	0.5, 1, 2 (2 pcs.), 4, 8 (3 pcs.), 12 (2 pcs.)	

\* "Spindle feed error" refers to the difference between the maximum and minimum indication error values within the measuring range of the micrometer head

## DIMENSIONS



## Inside Micrometers

### Tubular Inside Micrometers SERIES 137 — Extension-Rod Type (main unit)

- Micrometer head for Extension-Rod Type inside micrometer.
- The sleeve is rotated to adjust the reference point adjustment when setting to a length standard.
- Optional Setting Rings and Gauge Block Accessory Sets are available as reference gages for datum adjustment. (Refer to pages C-52 and E-17 to E-20 for details)



137-011

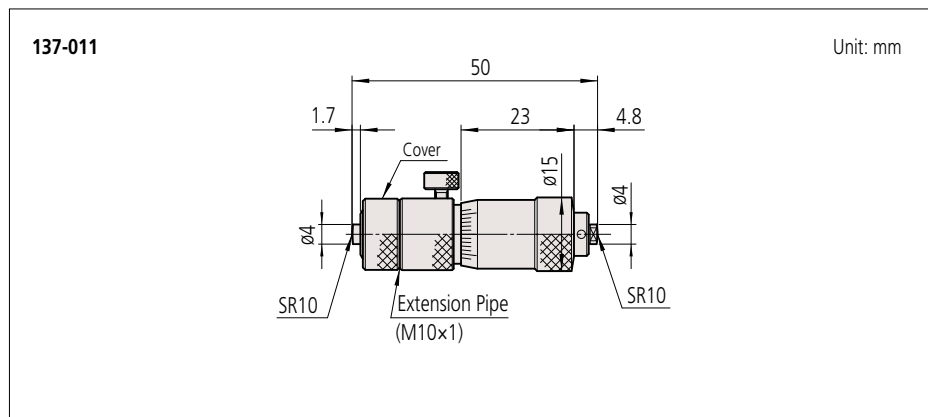
### SPECIFICATIONS

Metric				
Order No.	Range (mm)	Spindle feed error* (μm)	Graduation (mm)	Micrometer head stroke (mm)
137-011	50 - 63	3	0.01	13
Carbide-tipped 137-013				

Inch				
Order No.	Range (in)	Spindle feed error* (in)	Graduation (in)	Micrometer head stroke (in)
137-012	2 - 2.5	0.00015	0.001	0.5
Carbide-tipped 137-014				

\* "Spindle feed error" refers to the difference between the maximum and minimum indication error values within the specification range of the micrometer head

### DIMENSIONS



## Tubular Inside Micrometers SERIES 339 — Extension-Pipe Type

### Measurement example



### Functions

Zero-setting  
Origin restoration  
Data hold  
Function lock  
Automatic power ON/OFF  
2-point Preset  
Error alarm  
Data output

### Optional Accessories

Order No.	Type	description
05CZA662	B	Connecting cable (1 m)
05CZA663	B	Connecting cable (2 m)
06AFM380B	B	USB Input Tool Direct (2 m)
02AZD790B	B	Connecting cables for U-WAVE-T (160 mm)
02AZE140B	B	Connecting cables for U-WAVE-T For foot switch

- Wide range of inside measurements possible by combining Extension Pipes and anvils with the micrometer head.
- The sleeve is rotated to adjust the reference point adjustment when setting to a length standard.
- An inside length standard is required for accurately setting the micrometer.
- IP65 (water-proof) protection level that enables use in the presence of cutting fluid.



339-301

### SPECIFICATIONS

Metric							
Order No.	Range (mm)	Resolution (mm)	Spindle feed error* (μm)	Micrometer head stroke (mm)	Extension pipes		Display unit (mm)
					Qty	Size (mm)	
339-101	200 - 225	0.001	3	25	—	—	200 - 225
339-301	200 - 1000				5	25, 50, 100, 200, 400	
339-302	200 - 2000				8	25, 50, 100, 200 (2 pcs.), 400 (3 pcs.)	

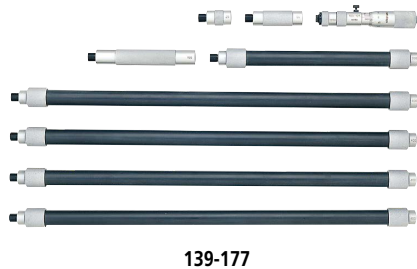
Inch/Metric							
Order No.	Range (in)	Resolution	Spindle feed error* (in)	Micrometer head stroke (in)	Extension pipes		Display unit (in)
					Qty	Size (in)	
339-102	8 - 9	0.0001 in/ 0.001 mm	0.00015	1	—	—	8 - 9
339-303	8 - 40				5	1, 2, 4, 8, 16	
339-304	8 - 80				8	1, 2, 4, 8 (2 pcs.), 16 (3 pcs.)	

- Battery and Scale Type: SR44 (1 pc.), **938882**, for initial operational checks (standard accessory)
- Battery life: Approx. 1.2 years under normal use
- Scale type: Electromagnetic induction-type rotary encoder
- \* "Spindle feed error" refers to the difference between the maximum and minimum indication error values within the measuring range of the micrometer head

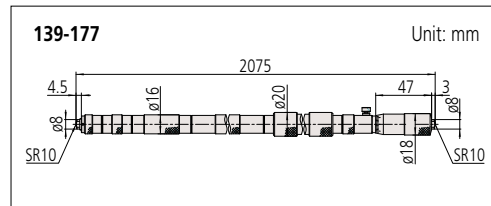
## Inside Micrometers

### Tubular Inside Micrometers SERIES 139, 140 — Extension-Pipe Type

- Wide range of inside measurements possible by combining Extension Pipes and anvils with the micrometer head.
- The sleeve is rotated to adjust the reference point adjustment when setting to a length standard.
- An inside length standard is required for accurately setting the micrometer.



#### DIMENSIONS

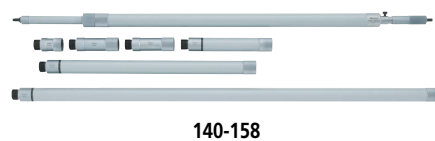


#### SPECIFICATIONS

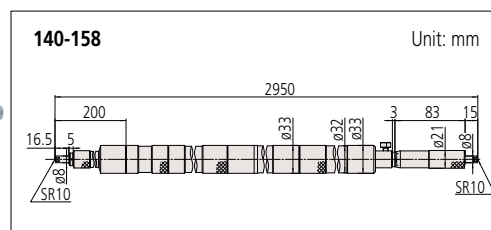
Metric							
Order No.	Range (mm)	Graduation (mm)	Spindle feed error* (μm)	Micrometer head stroke (mm)	Extension pipes		Main unit (mm)
					Qty	Size (mm)	
139-173	100 - 500	0.01	3	25	4	25, 50, 100, 200	100 - 125
139-174	100 - 900				5	25, 50, 100, 200, 400	
139-175	100 - 1300				6	25, 50, 100, 200, 400 (2 pcs.)	
139-176	100 - 1700				7	25, 50, 100, 200, 400 (3 pcs.)	
139-177	100 - 2100				8	25, 50, 100, 200, 400 (4 pcs.)	

Inch							
Order No.	Range (in)	Graduation (in)	Spindle feed error* (in)	Micrometer head stroke (in)	Extension pipes		Main unit (in)
					Qty	Size (in)	
139-178	4 - 20	0.001	0.00015	1	4	1, 2, 4, 8	4 - 5
139-179	4 - 36				5	1, 2, 4, 8, 16	
139-180	4 - 52				6	1, 2, 4, 8, 16 (2 pcs.)	
139-181	4 - 68				7	1, 2, 4, 8, 16 (3 pcs.)	
139-182	4 - 84				8	1, 2, 4, 8, 16 (4 pcs.)	

\* "Spindle feed error" refers to the difference between the maximum and minimum indication error values within the measuring range of the micrometer head



#### DIMENSIONS



#### SPECIFICATIONS

Metric							
Order No.	Range (mm)	Graduation (mm)	Spindle feed error* (μm)	Micrometer head stroke (mm)	Extension pipes		Main unit (mm)
					Qty	Size (mm)	
140-157	1000 - 2000	0.01	6	50	5	50, 100 (2 pcs.), 200, 500	1000 - 1050
140-158	1000 - 3000				6	50, 100 (2 pcs.), 200, 500, 1000	
140-159	1000 - 4000				7	50, 100 (2 pcs.), 200, 500, 1000 (2 pcs.)	
140-160	1000 - 5000				8	50, 100 (2 pcs.), 200, 500, 1000 (3 pcs.)	

Inch							
Order No.	Range (in)	Graduation (in)	Spindle feed error* (in)	Micrometer head stroke (in)	Extension pipes		Main unit (in)
					Qty	Size (in)	
140-161	40 - 80	0.001	0.0003	2	5	2, 4 (2 pcs.), 8, 20	40 - 42
140-162	40 - 120				6	2, 4 (2 pcs.), 8, 20, 40	
140-163	40 - 160				7	2, 4 (2 pcs.), 8, 20, 40 (2 pcs.)	
140-164	40 - 200				8	2, 4 (2 pcs.), 8, 20, 40 (3 pcs.)	

\* "Spindle feed error" refers to the difference between the maximum and minimum indication error values within the measuring range of the micrometer head

## Tubular Inside Micrometers SERIES 139 — Extension-Pipe Type (main unit)

- Micrometer head for Extension-Pipe Type inside micrometer.
- The sleeve is rotated to adjust the reference point adjustment when setting to a length standard.
- Optional Setting Rings, CERA Inside Micro Checker and Gauge Block Accessory Sets are available as reference gages for datum adjustment. (Refer to pages C-28, C-52, and E-17 to E-20 for details)



139-001

### SPECIFICATIONS

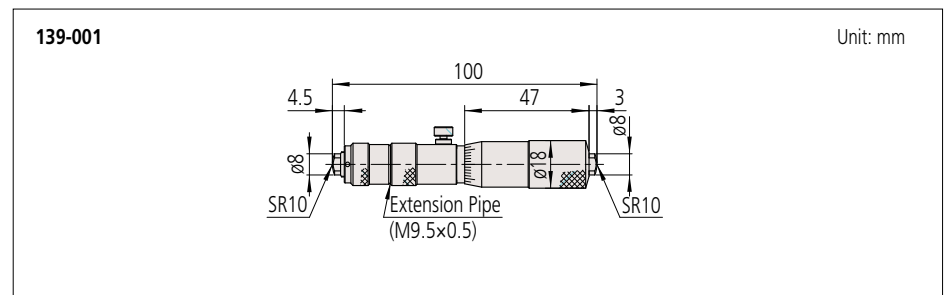
Metric				
Order No.	Range (mm)	Spindle feed error* (μm)	Graduation (mm)	Micrometer head stroke (mm)
139-001	100 - 125	3	0.01	25

Inch				
Order No.	Range (in)	Spindle feed error* (in)	Graduation (in)	Micrometer head stroke (in)
139-002	4 - 5	0.00015	0.001	1

\* "Spindle feed error" refers to the difference between the maximum and minimum indication error values within the specification range of the micrometer head

### DIMENSIONS





## Inside Micrometers

MeasurLink<sup>®</sup> ENABLED  
Data Management Software by Mitutoyo

### Inside Micrometers SERIES 345 — Caliper Type

- Carbide measuring faces.
- Equipped with a constant measuring-force device.
- Optional Setting Rings (nominal size below 300 mm), CERA Inside Micro Checker (more than 25 mm) and Gauge Block Accessory Sets are available as reference gages for datum adjustment. (Refer to pages C-28, C-52, and E-17 to E-20 for details)



345-250-30

### SPECIFICATIONS

Metric					
Order No.	Range (mm)	Resolution (mm)	Maximum permissible error $J_{MPE}$ ( $\mu\text{m}$ )	Jaw	Mass (g)
345-250-30	5 - 30	0.001	$\pm 5$	Pin	320
345-251-30	25 - 50		$\pm 6$	Anvil	325

Inch / Metric					
Order No.	Range (in)	Resolution	Maximum permissible error $J_{MPE}$ (in)	Jaw	Mass (g)
345-350-30	0.2 - 1.2	0.00005 in/ 0.001 mm	$\pm 0.00025$	Pin	320
345-351-30	1 - 2	0.001 mm	$\pm 0.0003$	Anvil	325

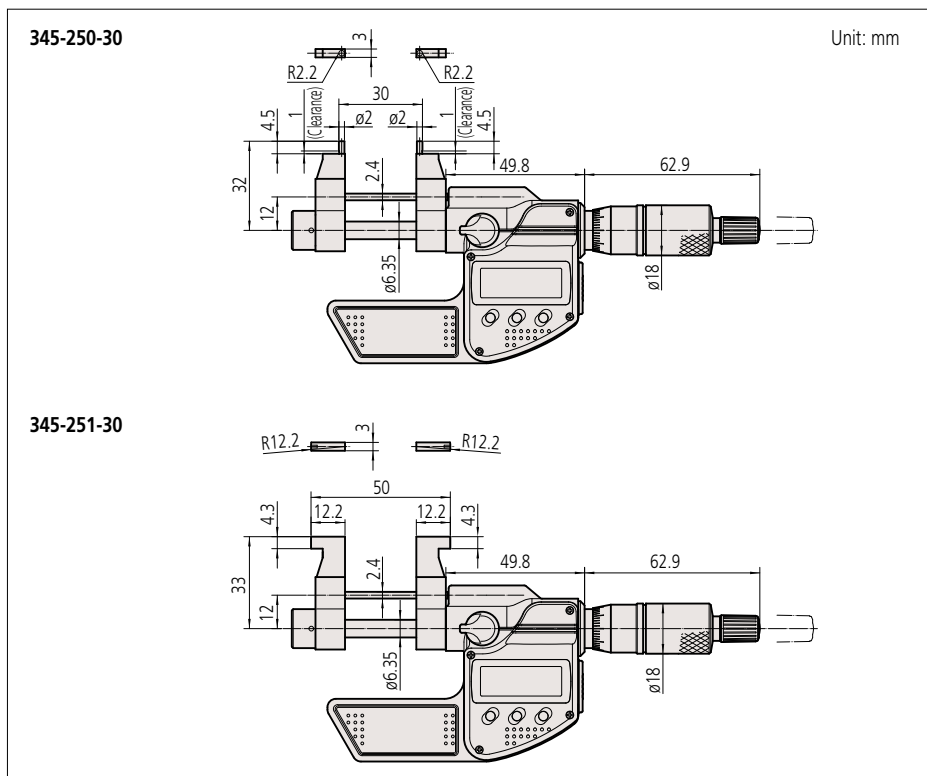
- Battery and Scale Type: SR44 (1 pc.), **938882**, for initial operational checks (standard accessory)
- Battery life: Approx. 2.4 years under normal use
- Scale type: Electromagnetic induction-type rotary encoder

Note 1: For the functions, refer to **293** Series with SPC data output on page B-7.

This model is NOT water-proof. Also, the origin setting is the free preset type.

Note 2: The minimum pitch circle measurement is  $\varnothing 5$  mm with pin type (**345-250-30**, **345-350-30**).

### DIMENSIONS



### Measurement example

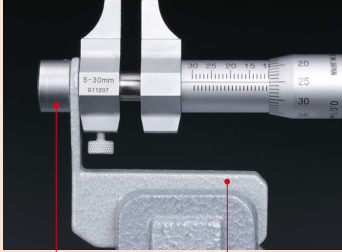


### Optional Accessories

Order No.	Type	description
05CZA662	B	Connecting cable (1 m)
05CZA663	B	Connecting cable (2 m)
06AFM380B	B	USB Input Tool Direct (2 m)
02AZD790B	B	Connecting cables for <b>U-WAVE-T</b> (160 mm)
02AZE140B	B	Connecting cables for <b>U-WAVE-T</b> For foot switch

## Inside Micrometers SERIES 145 — Caliper Type

### Accessories for 145-185 / 186 / 193 / 194 (optional)



Cap (300401)      Holder (300400)

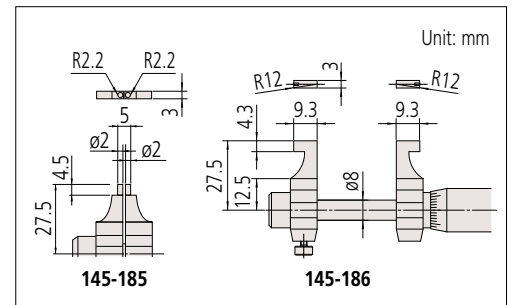
Note 1: This instrument requires the cap and the holder for mounting on a micrometer stand.  
Note 2: It may not be applicable to a custom specification.

- Carbide measuring faces.
- Equipped with a constant measuring-force device.
- Optional Setting Rings (nominal size below 300 mm), CERA Inside Micro Checker (more than 25 mm) and Gauge Block Accessory Sets are available as reference gages for datum adjustment. (Refer to pages C-28, C-52, and E-17 to E-20 for details)



145-185

### DIMENSIONS

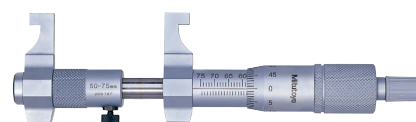


### SPECIFICATIONS

Metric					
Order No.	Range (mm)	Graduation (mm)	Maximum permissible error $J_{MPE}$ ( $\mu\text{m}$ )	Jaw	Mass (g)
145-185	5 - 30	0.01	$\pm 5$	Pin	130
145-186	25 - 50		$\pm 6$	Anvil	140

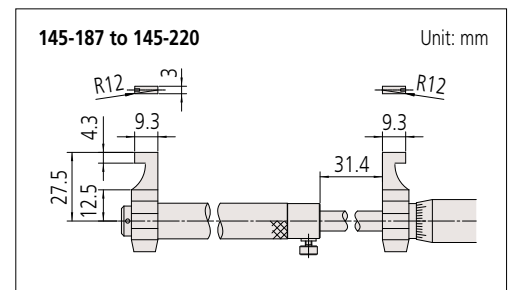
Inch					
Order No.	Range (in)	Graduation (in)	Maximum permissible error $J_{MPE}$ (in)	Jaw	Mass (g)
145-193	0.2 - 1.2	0.001	$\pm 0.00025$	Pin	130
145-194	1 - 2		$\pm 0.0003$	Anvil	140

Note: The minimum pitch circle measurement is  $\varnothing 5$  mm with pin type (145-185, 145-193).



145-187

### DIMENSIONS



### SPECIFICATIONS

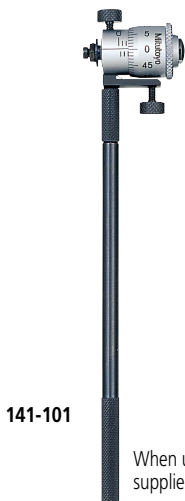
Metric					
Order No.	Range (mm)	Graduation (mm)	Maximum permissible error $J_{MPE}$ ( $\mu\text{m}$ )	Jaw	Mass (g)
145-187	50 - 75	0.01	$\pm 7$	Anvil	160
145-188	75 - 100		$\pm 8$	Anvil	180
145-189	100 - 125		$\pm 9$	Anvil	210
145-190	125 - 150		$\pm 10$	Anvil	230
145-191	150 - 175		$\pm 10$	Anvil	250
145-192	175 - 200		$\pm 10$	Anvil	270
145-217	200 - 225		$\pm 11$	Anvil	310
145-218	225 - 250		$\pm 11$	Anvil	330
145-219	250 - 275		$\pm 12$	Anvil	350
145-220	275 - 300		$\pm 12$	Anvil	370

Inch					
Order No.	Range (in)	Graduation (in)	Maximum permissible error $J_{MPE}$ (in)	Jaw	Mass (g)
145-195	2 - 3	0.001	$\pm 0.00035$	Anvil	160
145-196	3 - 4		$\pm 0.0004$	Anvil	180

## Inside Micrometers

### Inside Micrometers SERIES 141 — Interchangeable-Rod Type

- Wide range of inside measurements possible by combining one or more Interchangeable Rods.
- For models supplied with more than one Interchangeable Rod, the full measuring range is achieved by combining spacing collars with the rods.



141-101

When using one of the extension rods supplied (Measuring range 25 to 32 mm)

#### Measurement example



## SPECIFICATIONS

### Metric

Order No.	Range (mm)	Spindle feed error*2 (μm)	Graduation (mm)	Micrometer head stroke (mm)	Remarks
141-101 / 141-103*1	25 - 50	3	0.01	7	with 2 rods
141-205 / 141-211*1	50 - 200			13	with 3 rods
141-206 / 141-212*1	50 - 300			with 5 rods	
141-117	200 - 500			25	with 3 rods
141-118	200 - 1000			with 8 rods	

### Inch

Order No.	Range (in)	Spindle feed error*2 (in)	Graduation (in)	Micrometer head stroke (in)	Remarks
141-102 / 141-104*1	1 - 2	0.00015	0.001	0.25	with 2 rods
141-208 / 141-214*1	2 - 8			0.5	with 3 rods
141-233 / 141-215*1	2 - 12			with 5 rods	
141-121	8 - 20			1	with 3 rods
141-122	8 - 40			with 8 rods	

\*1 With carbide measuring face

\*2 "Spindle feed error" refers to the difference between the maximum and minimum indication error values within the specification range of the micrometer head

### Metric

Micrometer head only model

Order No.	Range (mm)	Spindle feed error*2 (μm)	Graduation (mm)	Micrometer head stroke (mm)
141-001 / 141-003*1	25 - 32	3	0.01	7
141-025 / 141-027*1	50 - 63			13
141-009 / 141-011*1	200 - 225			25

### Inch

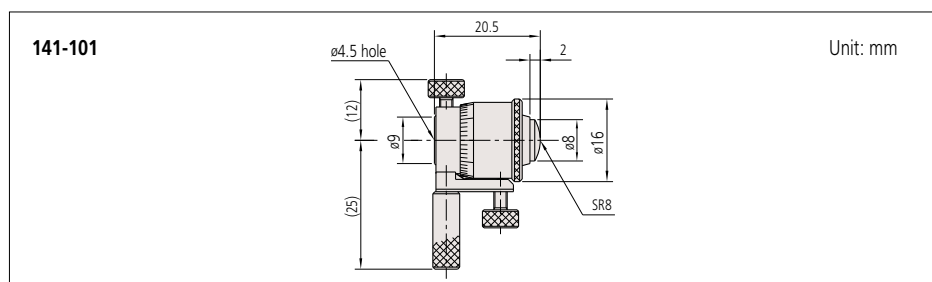
Micrometer head only model

Order No.	Range (in)	Spindle feed error*2 (in)	Graduation (in)	Micrometer head stroke (in)
141-002 / 141-004*1	1 - 1.25	0.00015	0.001	0.25
141-026 / 141-028*1	2 - 2.5			0.5
141-010 / 141-012*1	8 - 9			1

\*1 With carbide measuring face

\*2 "Spindle feed error" refers to the difference between the maximum and minimum indication error values within the specification range of the micrometer head

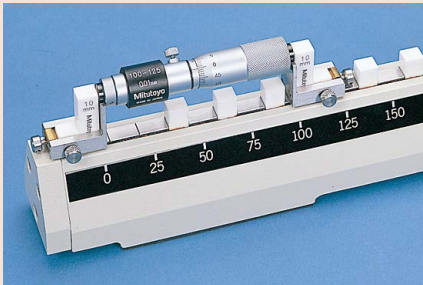
## DIMENSIONS



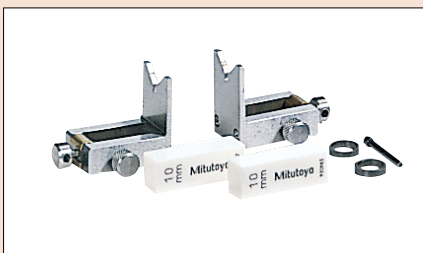


## CERA Inside Micro Checker SERIES 515

### Measurement example



### Standard accessory set

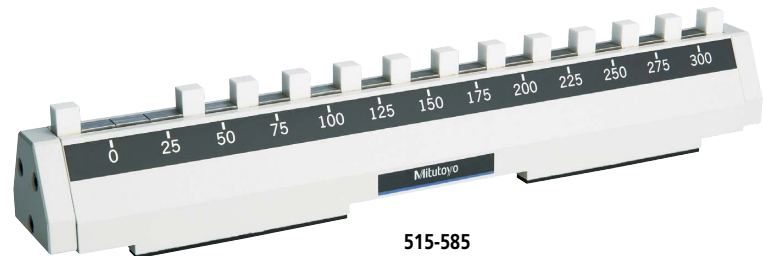


- Support clamps **940286\*** Pair
  - Auxiliary block 10 mm **602195** 2 pcs.
  - Collar **602195** 2 pcs.
  - Clamp screwdriver **600324** 1 pc.
- \* Order No. is equivalent to a pair (2 pcs.)

### Wooden box (optional)

- 602160** (for 515-585)
- 602163** (for 515-586)

- The Inside Micro Checker is designed to act as a setting standard for inside micrometers.
- Applicable for SERIES **133**, **139** and **145** (over 50 mm). Not applicable for SERIES **137**, **141**, **337** and **339**.



515-585

## SPECIFICATIONS

Order No.	Length to check (mm)	Block pitch accuracy
<b>515-585</b>	25 - 300	$\pm(1 + L/150) \mu\text{m}$ L: Length to check (mm)
<b>515-586</b>	25 - 600	

Note: Please note that the bottom surface and the contact faces are not precisely perpendicular to each other.

## DIMENSIONS

